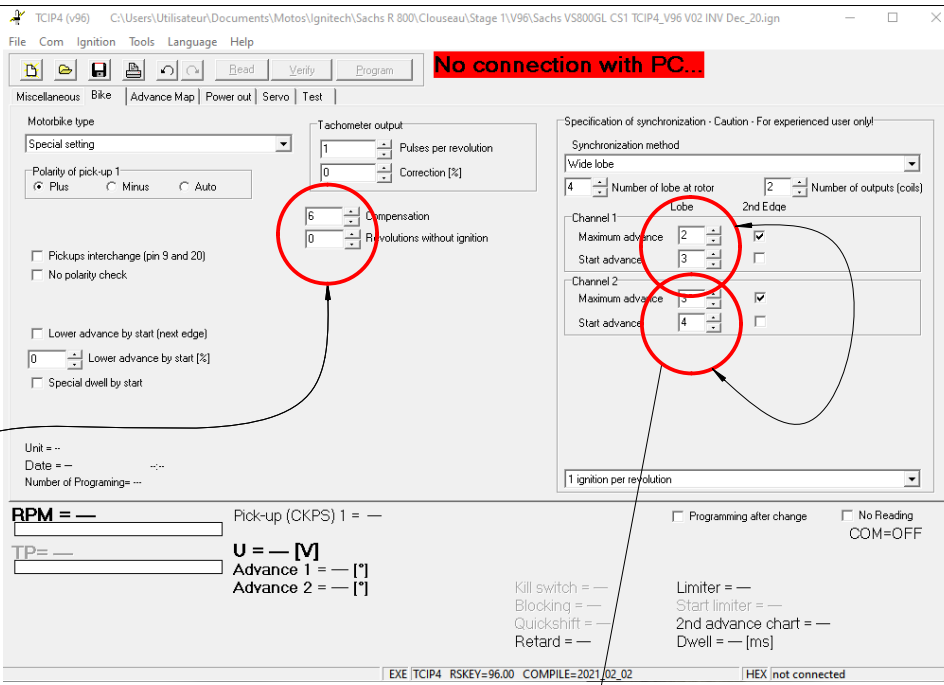


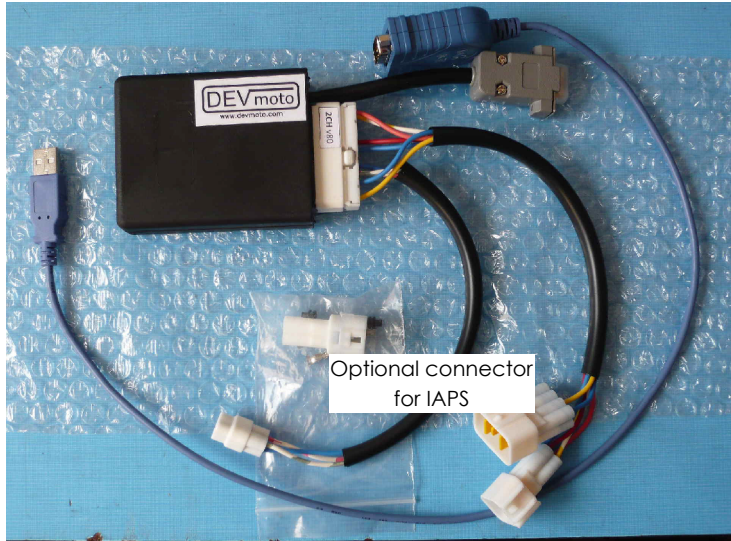
New manual Dwell timings



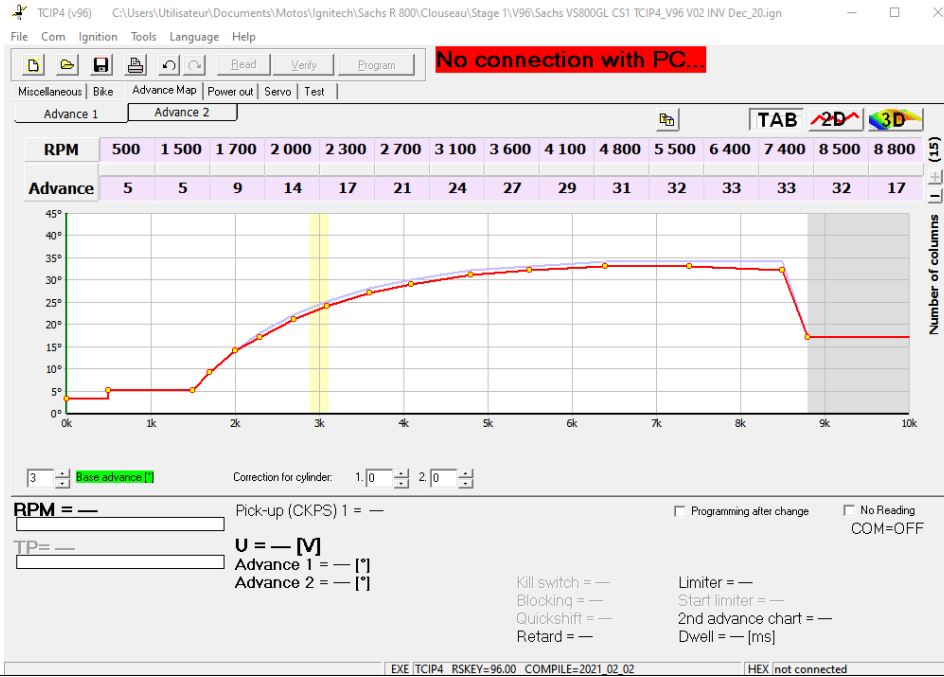
"0" revolution without ignition by default.
New compensation "6".

Sometimes, the wires of channels are inverted.
So you must reverse the numbers of lobes in the software

TCIP4 V88 and V96 are the same units.
you can upgrade a V88 with a V96 uploader.



Tested with success on long distance (30 000 kms)
including highway (2000 kms at 134 km/h GPS) and high temp (35-37°C)
with CS1 carburation kit, NGK Iridium sparkplugs, SP95E10 or SP98 (2nd chart).



19F
11/02/2021
Ech = 1:X



Sachs Roadster 800 / Suzuki VS 800GL Intruder / Suzuki VX 800 USA CA
IgniteTech TCI-P4 V96. Keying Clouseau Stage 1 without IAPS.

