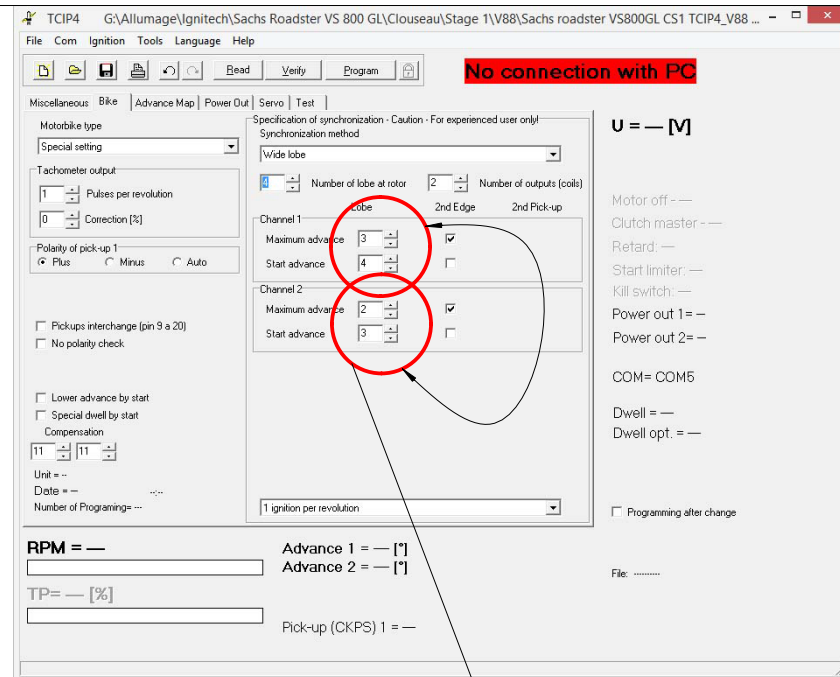
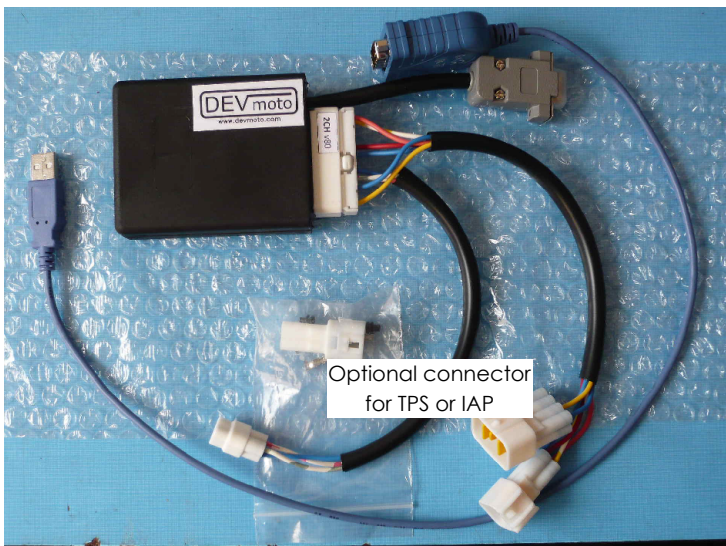


"1" revolution without ignition is not necessary. With "0", the engine starts more quickly



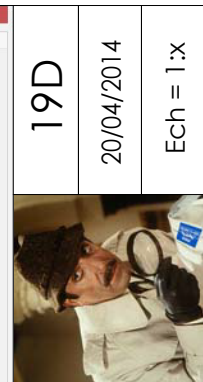
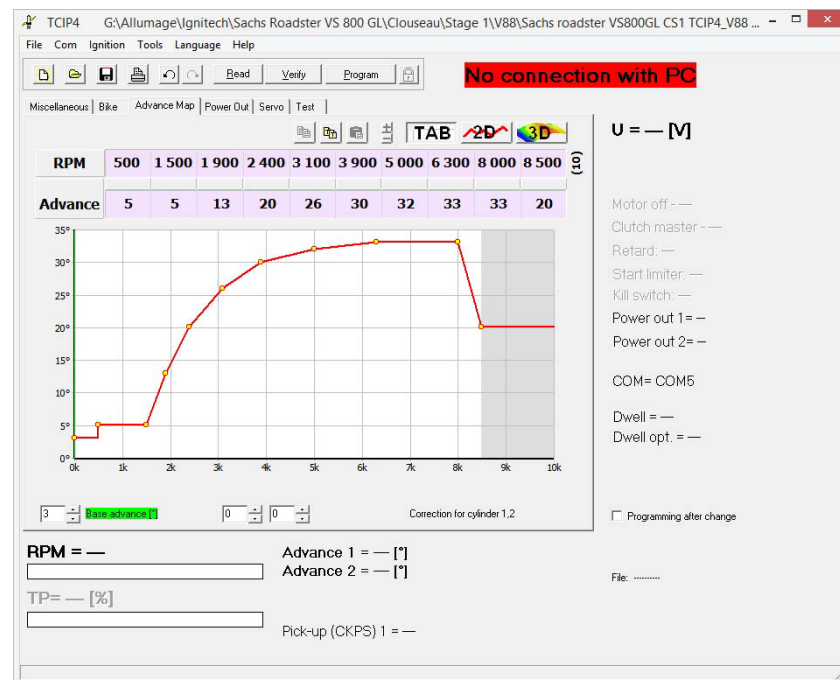
Sometimes, the wires of channels are inverted. So you must reverse the numbers of lobes in the software



Tested with success on long distance (10 000 kms) including highway (2000 kms at 134 km/h GPS) and high temp (35-37°C) with CS1 carburation kit, NGK Iridium sparkplugs and SP95E10.



OK



19D
20/04/2014
Ech = 1:X
Sachs Roadster 800 / Suzuki VS 800GL Intruder / Suzuki VX 800 USA CA
IgniTech TCI-P4 V88. Setting with Clouseau Stage 1.

